

Wood Sealing and Waterproofing Basic Steps

Guidelines

- Ensure that the wood is as dry as possible; any excessive moisture will be sealed within the wood once it is impregnated with resin.
- Use a fast evaporating solvent to dilute the epoxy such as acetone or MEK (ketone based solvents). Add no more than 5% solvent by weigh or by volume to the mixed resin.
- Ensure that the entire wood surface is coated with the epoxy sealant. For best results, coat the entire exposed surface area with the prepared epoxy resin mixture.
- Apply multiple coats until all porosity of the wood is sealed; some grain rising can be expected upon coating.
- Allow the applied coats to cure for at least 24 to 36 hours before proceeding.
- For a smoother finish, sand the cure surface just enough to remove surface gloss and removed and surface blemishes caused by the grain raising.
- Lightly sand the surface to remove any grain rising if desired with 280- to 300- grit sandpaper.



Please visit our web site at
www.polymercompositesinc.com
for ordering and information.

Or call our customer service number:
877 403 8008

**Monday to Friday
9:00 am to 4:00 pm PST**

You can also find us on eBay at
www.stores.ebay.com/Polymer-Products

Wood Sealing Procedure



4x8 Plywood
800/400 grams MAX PCR A/B
300 Grams Acetone
Applied via Roll Coater



Mix Well



800 Grams MAX PCR PART A



Add Acetone – Maximum 7% by Weight – Mix Well



400 Grams MAX PCR PART B



Apply 1st Coat

Wood Sealing Procedure



Allow to Penetrate for 20 Minutes



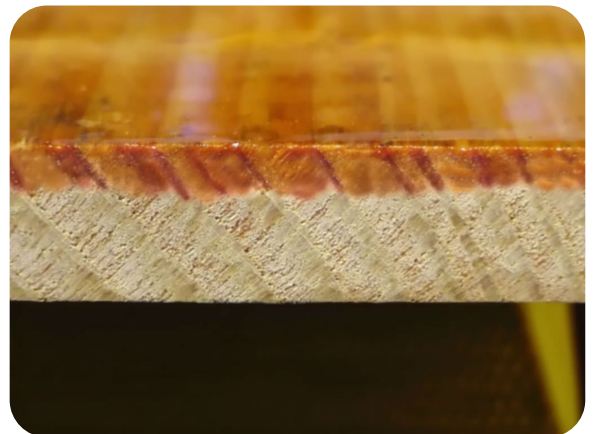
Waterproof Seal



Apply Heavy 2nd Coat



Allow to Cure for 24 Hours



Depth of Penetration – 7% Acetone Solution

Products for Wood Sealing and Waterproofing

MAX CLR –

<http://www.ebay.com/itm/310123985135>

MAX CLR-HP –

<http://www.ebay.com/itm/310187764669>

MAX BOND LOW VISCOSITY –

<http://www.ebay.com/itm/280255931847>

MAX PCR –

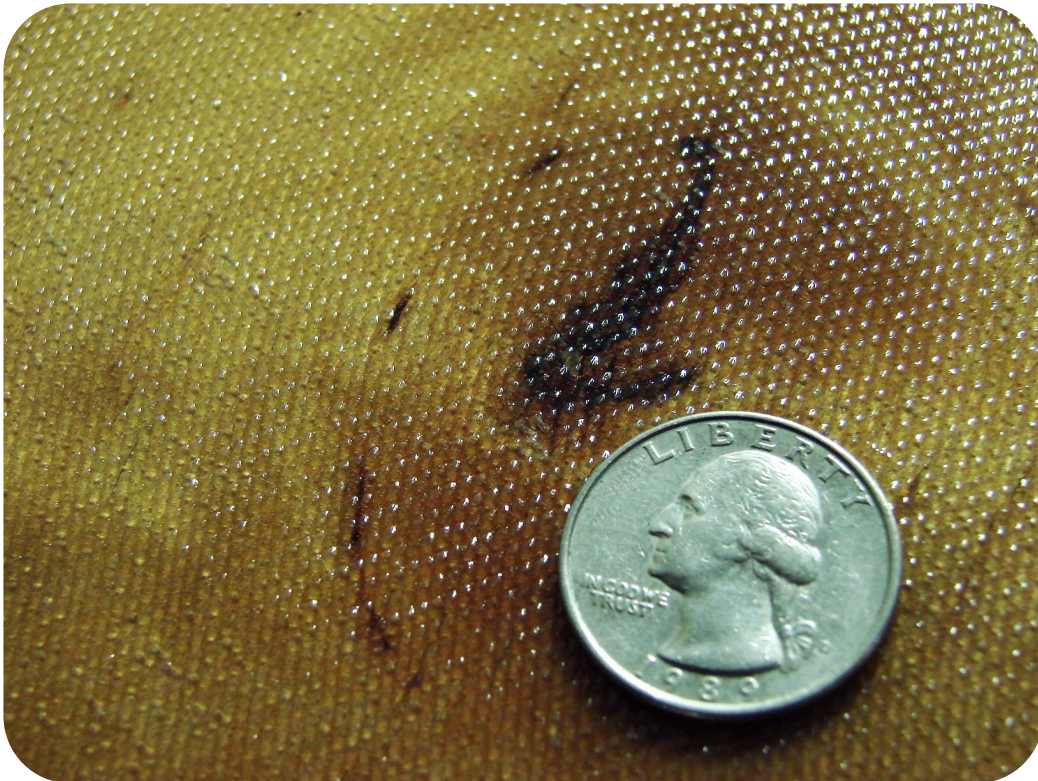
<http://www.ebay.com/itm/310074924441>

Fiberglassing Over the Sealed Wood for Increased Strength and Stability

Choose the proper fiberglass weight and weave for the job.

Recommended fiberglass styles

- STYLE 7500 – [Purchase on eBay](#)
- STYLE 1581 – [Purchase on eBay](#)



- Apply another coat of the epoxy, this time do not add any solvent to insure maximum strength development.
- Use a plastic spreader or flat plastic spreader to consolidate the fiberglass to wood. Use this to smoothen the fiberglass and remove excess resin and entrapped air bubbles.
 - Allow the epoxy resin to cure for 24 hours.
 - Upon cure, the cured laminate can be directly painted with a UV resistant polyurethane or acrylic paint to protect the epoxy resin from the damaging effects of direct UV (sunlight) exposure.

Polymer Composites, Inc.

1871 South Lake Place
Ontario California 91761
Tel. (909) 673 -1625 Fax (909) 673 1625
www.polymercompositesinc.com

Purchase on eBay:

<http://www.ebay.com/usr/polymerproducts>

Like us on Facebook:

<https://www.facebook.com/PolymerCompositesInc>

Subscribe on YouTube:

<https://www.youtube.com/user/PolymerProductsPCI>